

## Docklands Penthouse

**Project:** 300sqm Luxury Penthouse in Melbourne's Dockland precinct

**Job Value:** \$250k +

**Brief:** The contractor brought their client to the Middy's Technologies showroom where they were shown the various Home Automation products and systems available. This allowed the client to operate the Switches and Touch Screens and confirm choice of styles and colors all of which are on view in working and static displays. Having seen ElecVision's Lighting, Curtain, Shutter, Air-Conditioning, Irrigation, and Audio / Video systems, the client chose to proceed with all systems.

### Overview:

Middy's Technologies did a design and take off from final plans for the Home Automation components including programming & commissioning. Contractors did general electrical and Air-Conditioning designs.

Middy's Technologies made a number of site visits to advise installers on issues such as segregation and routing of the Bus Cable, what cables needed to be installed to accommodate the various Touch Screens and to integrate the electric curtains and air-conditioners.

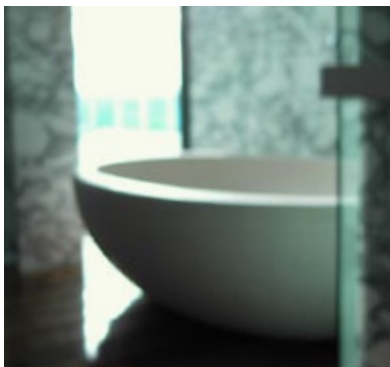
Once contractors were up to fitting stage of Switchboards and C-Bus Relays & Dimmers, Middy's supplied the C-Bus components and we began pre-programming the basic operation into them. This means once power is applied on site, they immediately begin working and give the electricians the chance to ensure all lighting circuits and fittings are functional. Generally, lighting circuits are powered up first and the curtains and air-conditioners follow closer to hand over.

The Touch Screens programming was done last and then final commissioning to ensure all systems were working together.

A number of "Scenes" were loaded into the Touch Screens such as All OFF, Welcome Home, Movie Scene, Duress, and Goodnight. These scenes are a convenient way to set moods and control large areas of lights and curtains at the touch of a button, an example would be closing all the curtains and setting lights in living areas to a relaxing level for the evening. Another scene was used to close all North facing curtains when the temperature reached a set point, this saves on energy used by the air-conditioners by reducing the heat entering the penthouse.

### Spec Snapshot:

- Lighting & Exhaust fans on C-Bus including Rope lights & Uplights on the External Deck areas
- Motorised Blinds and Curtains, approximately 20 sets
- 4 Air-Conditioning systems in different zones of the Penthouse
- 2 Clipsal Color Touch Screens
- 3 C-Bus switchboards located in various areas to reduce the amount of 240v wiring



For more information contact our Technologies team:

1800 778 823 | [technologies@middys.com.au](mailto:technologies@middys.com.au) | [middystechnologies.com.au](http://middystechnologies.com.au)